



Wold

Berkeley School District 87

**LONG RANGE PLANNING
COMMITTEE**

14 NOVEMBER 2018

Long Range Planning Agenda

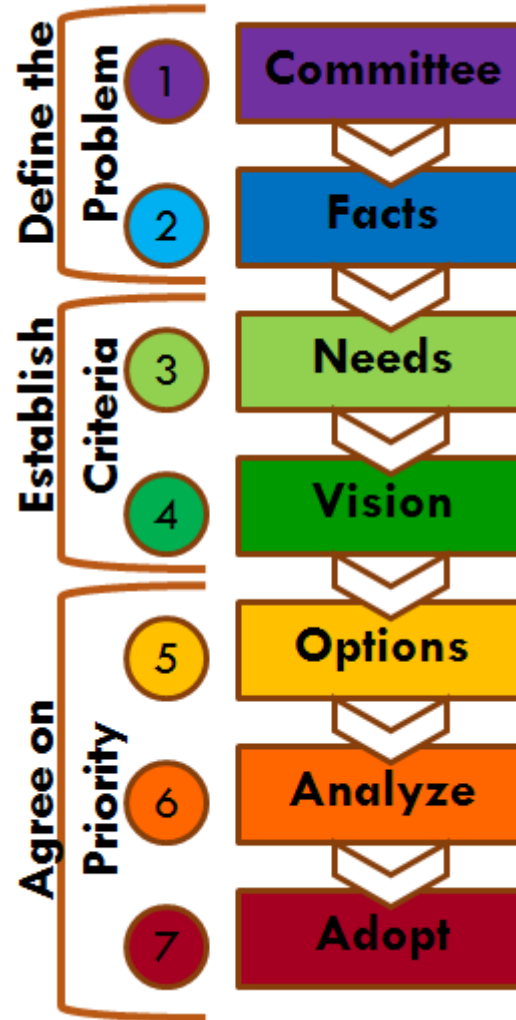
- Welcome
- Background of Process
- Top District Needs
- Group Poll
- Overview of Opportunities
- Question & Answer
- Building Tours



Long Range Planning Next Generation Environments



Long Range Planning Process





Long Range Planning Current Spaces



Long Range Planning Committee Guidelines



Educational Alignment Findings – Common Issues

- Site Utilization – Sites are small
- Parent Drop/Off – Site Traffic, Parking
- Classroom Utilization – Enrollment exceeds “Instructional” Capacity
- Classrooms – average size < 700 SF vs 900 SF recommended
- Large & Small Group Activities
 - Few spaces dedicated for small group instruction & collaboration (~5 students)
- Shared Gym/Cafeteria – set-up/clean-up conflicts with greater large group use
- Early Childhood
 - Large motor activity space
 - Equipment Storage
- Media Center Evolution
- STEM & Specials

Long Range Planning Educational Alignment Findings

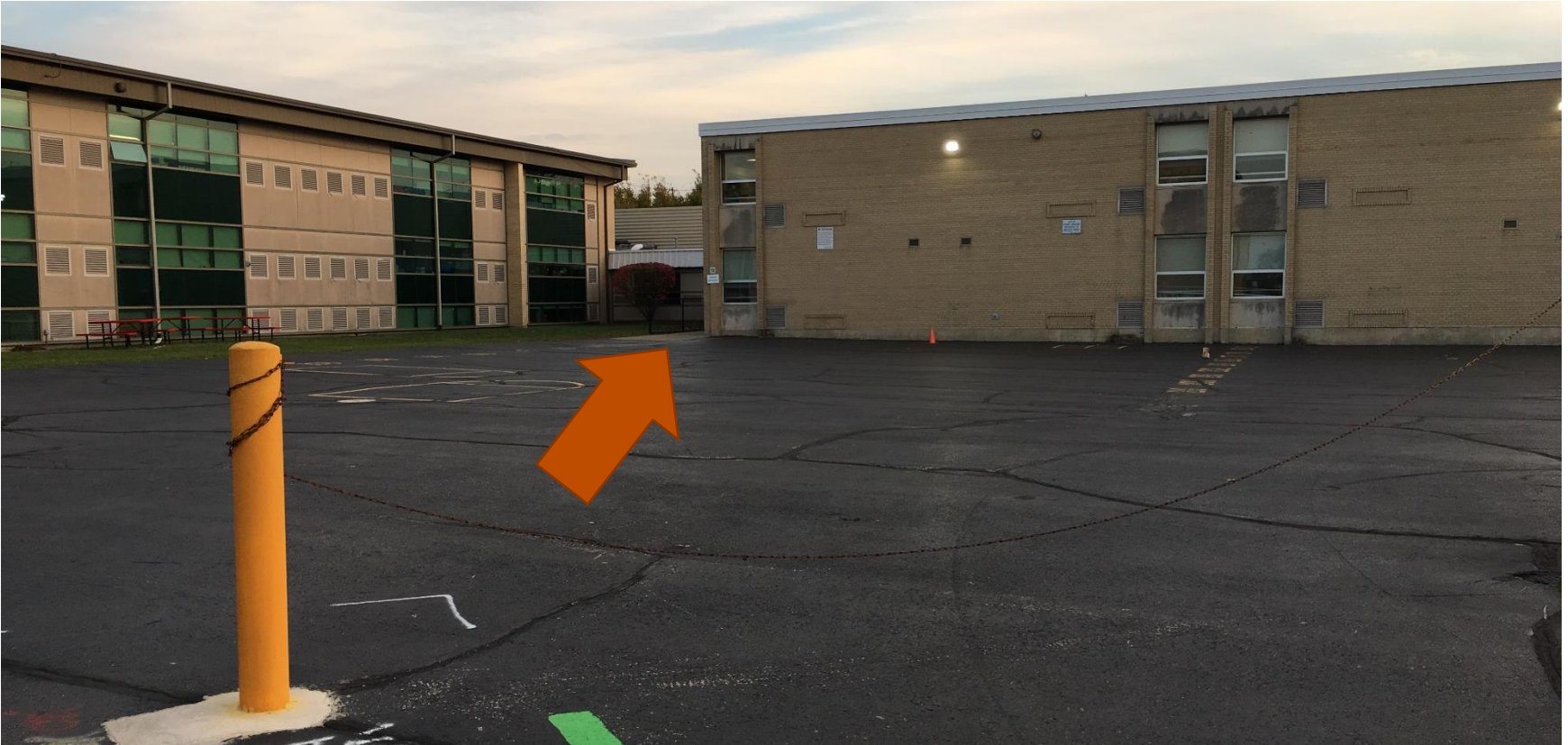
Traffic / Parent Drop-off



JEFFERSON PRIMARY SCHOOL

Long Range Planning Educational Alignment Findings

Visible Entrances



SUNNYSIDE INTERMEDIATE SCHOOL

Long Range Planning Educational Alignment Findings

Cafeterias



MACARTHUR MIDDLE SCHOOL

Long Range Planning Educational Alignment Findings

Media Center Evolution



RILEY MEDIA CENTER



NEXT GENERATION MEDIA CENTER

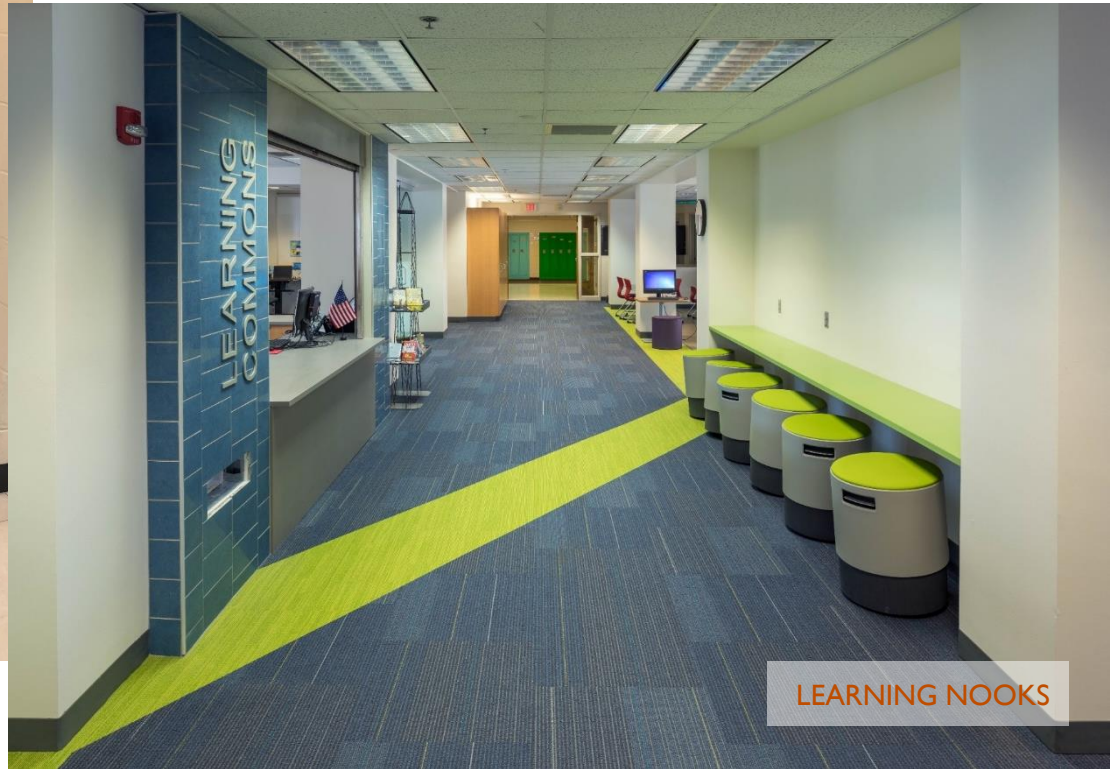
Long Range Planning Educational Alignment Findings

Collaborative Learning Support



Long Range Planning Educational Alignment Findings

Learning Everywhere



LEARNING NOOKS

Long Range Planning

Guiding Principles

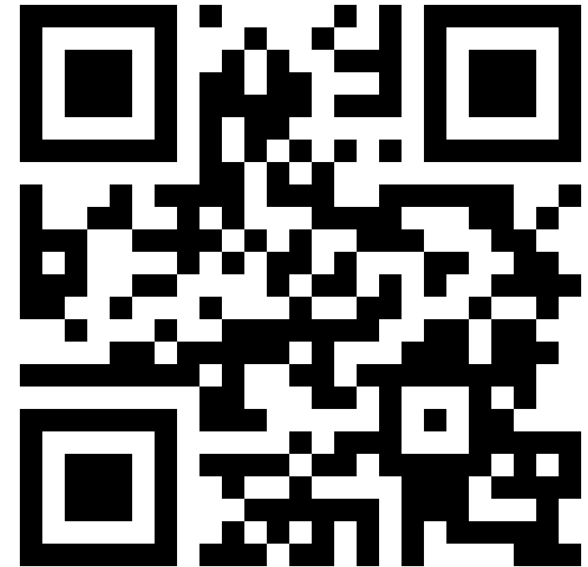
Over-arching qualities and characteristics that the long-range plan needs to embody.

- Create equal opportunities for learning throughout district.
- Provide safe and welcoming facilities.
- Develop spaces which can be adaptable, flexible, and functionally efficient.
- Create healthy environments to optimize learning and work.
- Create adaptable environments for technology enabled learning.
- Learning environments should be age and curriculum appropriate.
- Incorporate sustainable solutions for building improvements.
- Develop safe areas to promote outdoor play and learning opportunities.
- Engage community connection with shared spaces.
- Environments must allow for advancement of next generation skills.
- Promote a vibrant, engaging identity/brand for each school.
- Accommodate future population shifts.
- District-wide – make library spaces more flexible and an extension of classrooms.
- Accessibility should remain a district standard.
- Improve occupant flow in schools.
- Site traffic and movement should be convenient and safe.
- Create spaces to support wellness

Specific instructions or parameters for elements or solutions within the long-range plan.

Poll of Design Criteria created by the
Long Range Planning Committee:

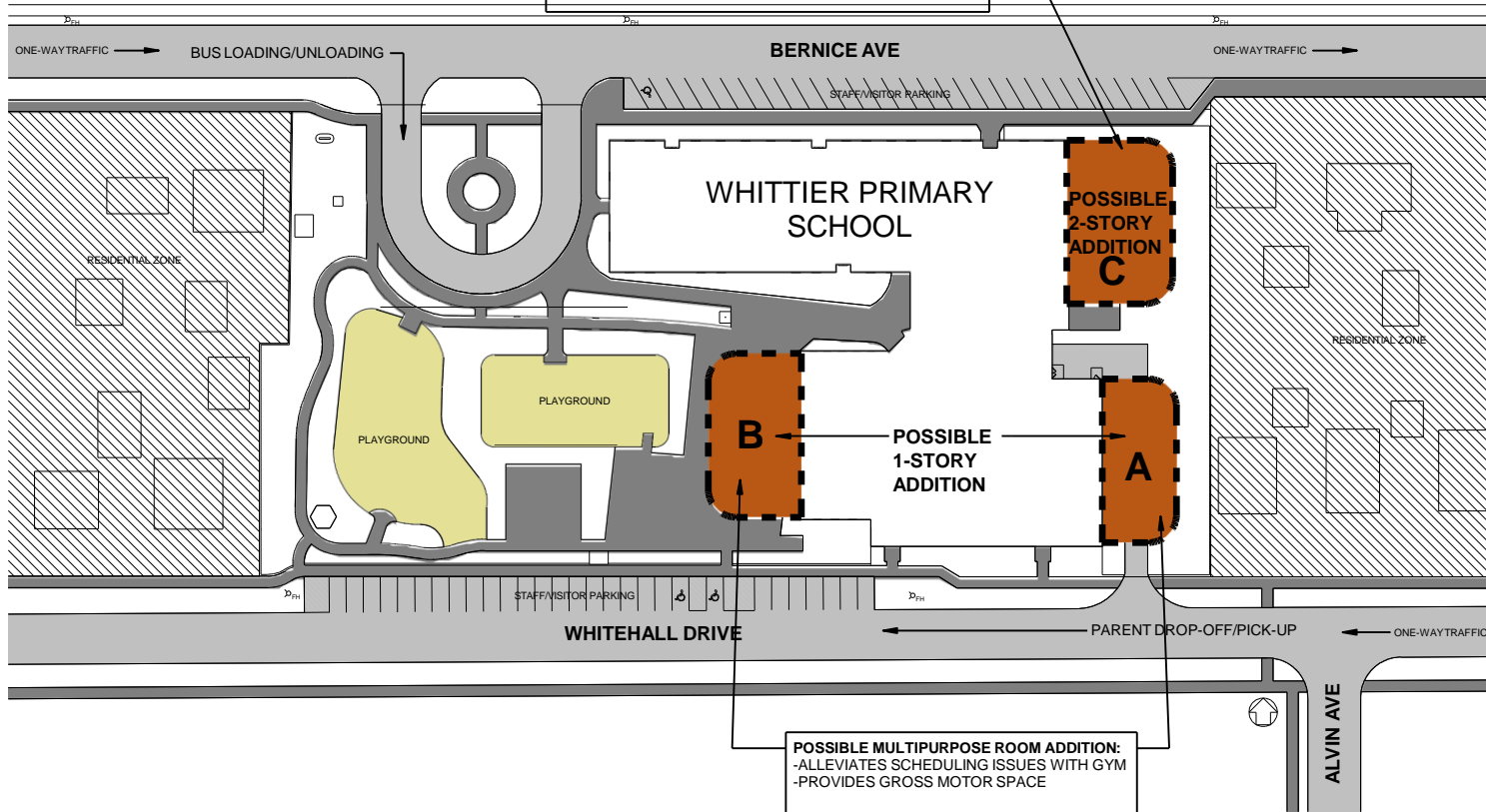
- Vote on the following poll on a scale of 1-5
- 5 being the most critical, 1 being least critical





BERKELEY SCHOOL DISTRICT 87
LONG RANGE PLANNING STUDY
WHITTIER – SITE PLAN

POSSIBLE CLASSROOM ADDITION:
-MODIFICATIONS TO EARLY CHILDHOOD PLAYGROUND
REQUIRED



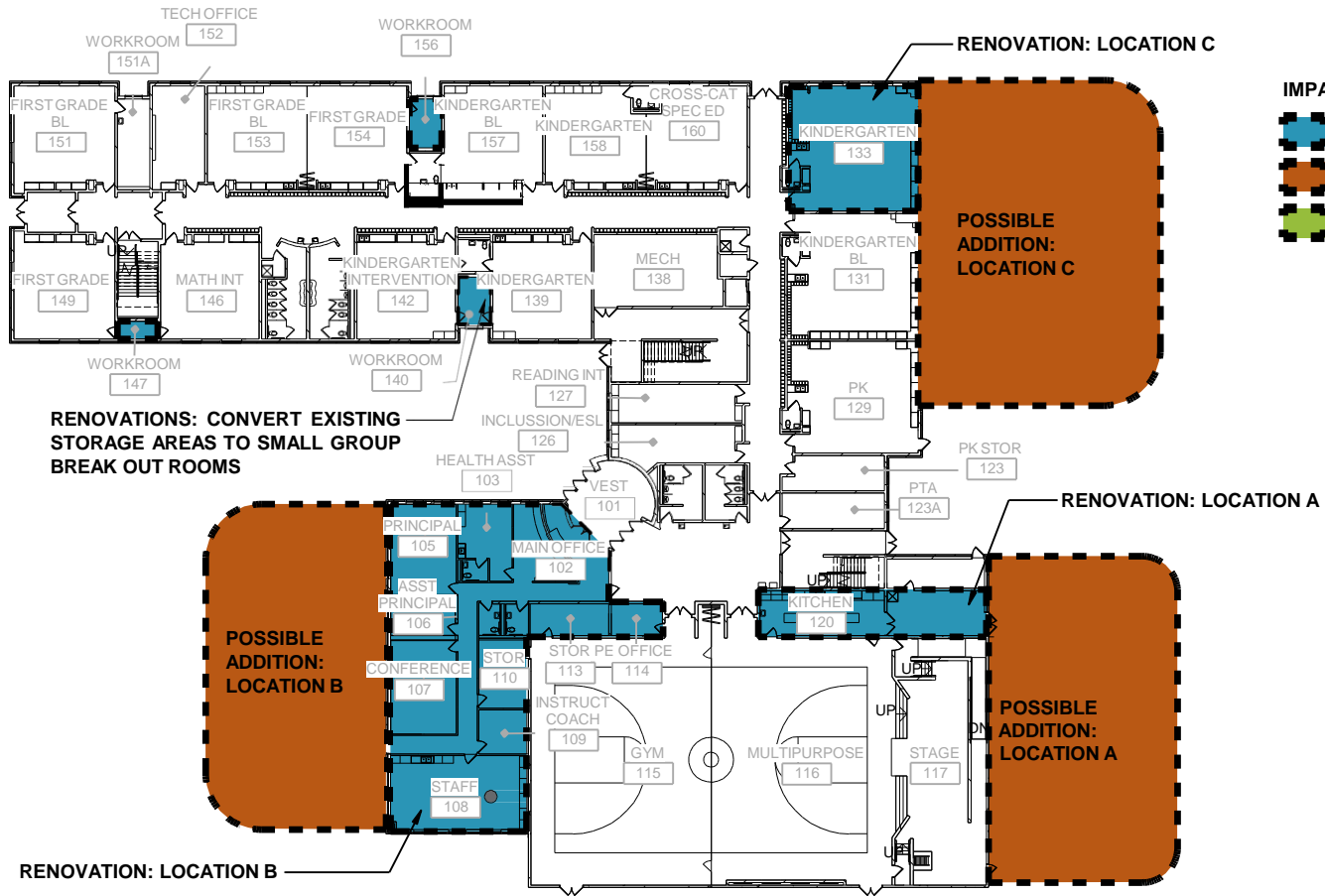
IMPACT AREAS LEGEND

- RENOVATED LOCATION
- POTENTIAL ADDITION
- SITE INTERVENTION

POSSIBLE MULTIPURPOSE ROOM ADDITION:
-ALLEVIATES SCHEDULING ISSUES WITH GYM
-PROVIDES GROSS MOTOR SPACE



BERKELEY SCHOOL DISTRICT 87
LONG RANGE PLANNING STUDY
WHITTIER – MAIN LEVEL



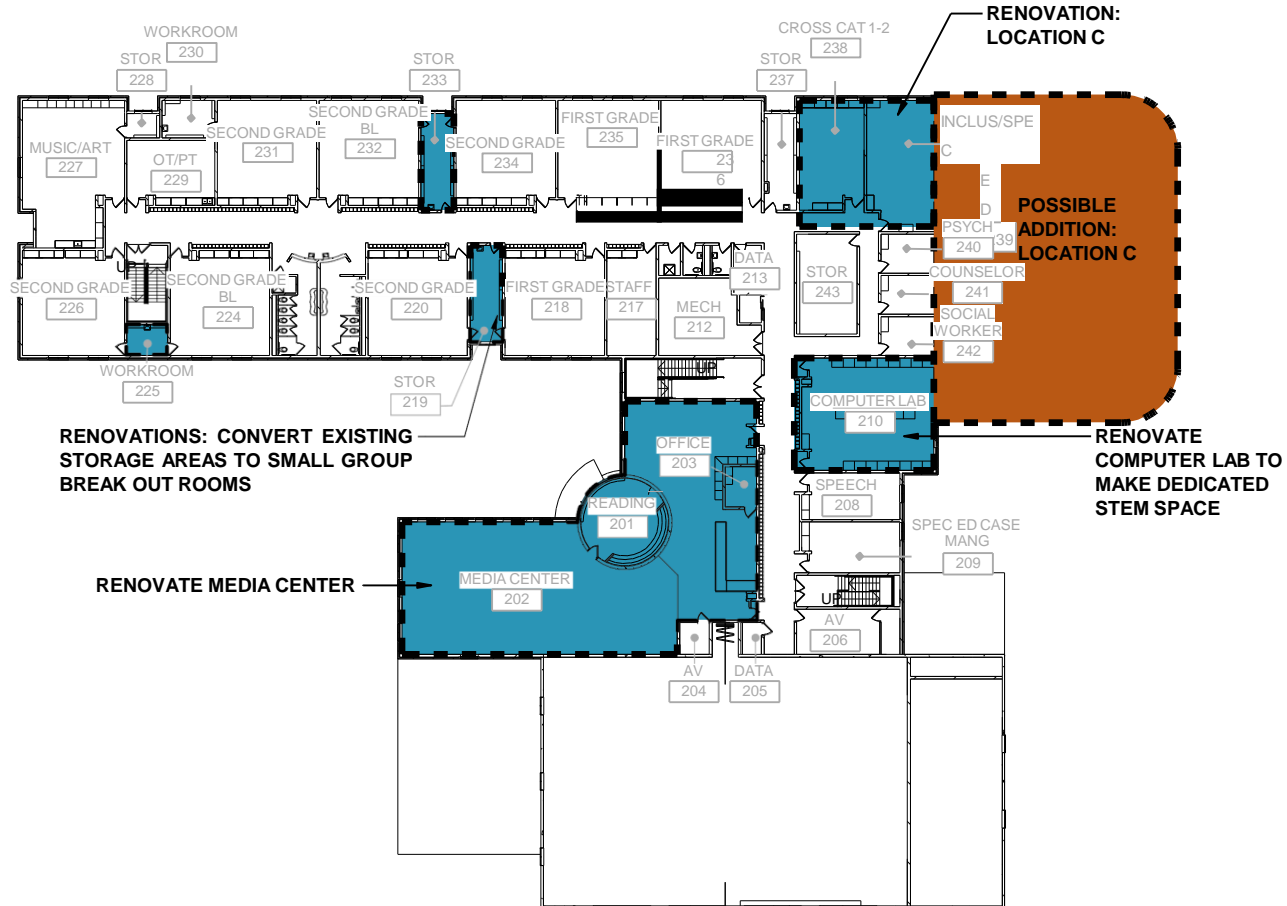
IMPACT AREAS LEGEND

- RENOVATED LOCATION
- POTENTIAL ADDITION
- SITE INTERVENTION

10/24/2018 12:30:27 PM
C:\Users\jafar\Documents\PS_Whittier (Central_2018)_jafar\11.rvt
User:rv-4.wolba.com\fraser@sd_berkeley_87\ES-Whittier\REVIT Models\PS_Whittier (Central_2018).rvt

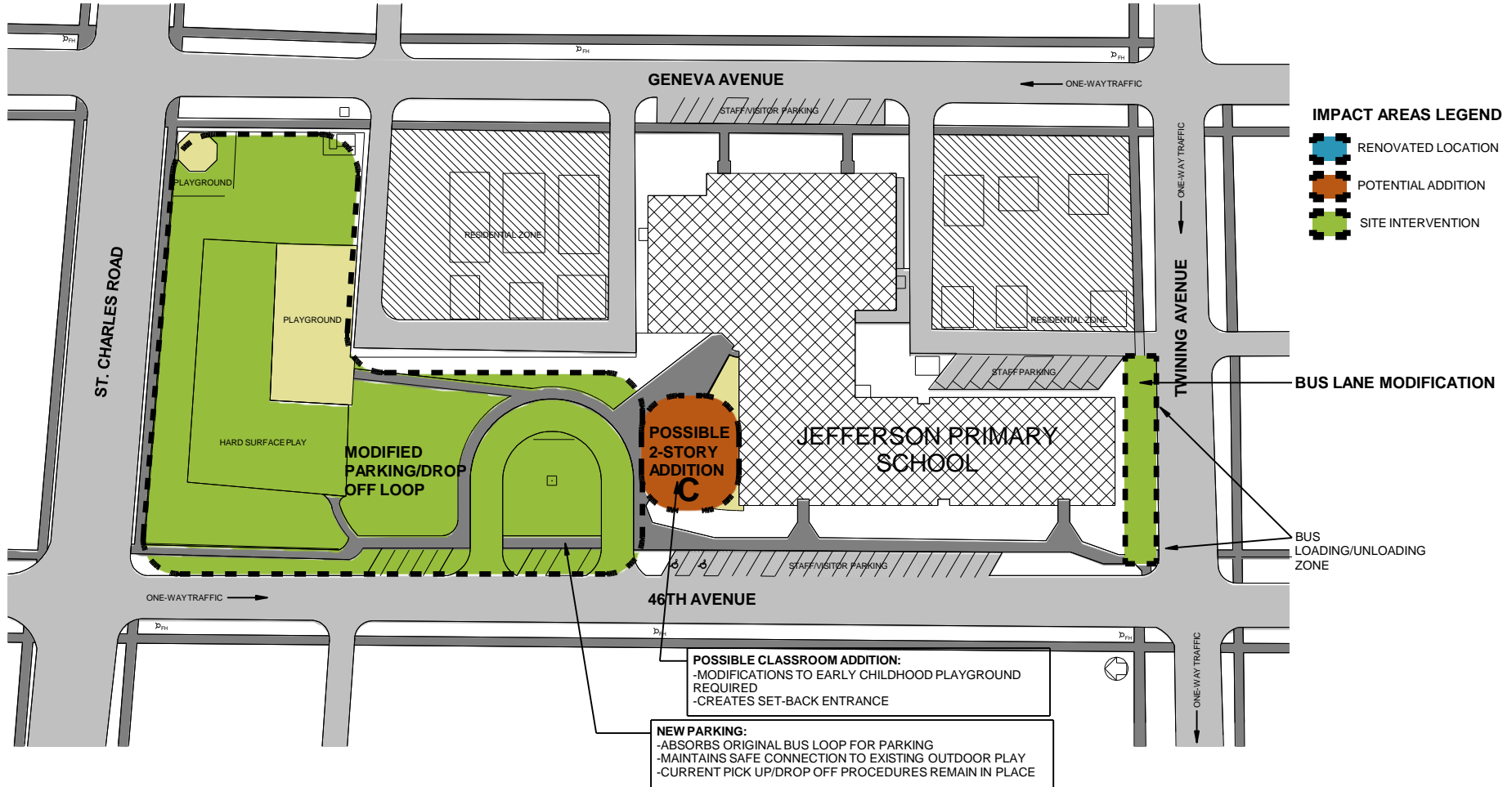


BERKELEY SCHOOL DISTRICT 87
LONG RANGE PLANNING STUDY
WHITTIER – UPPER LEVEL





BERKELEY SCHOOL DISTRICT 87
LONG RANGE PLANNING STUDY
JEFFERSON – SITE PLAN

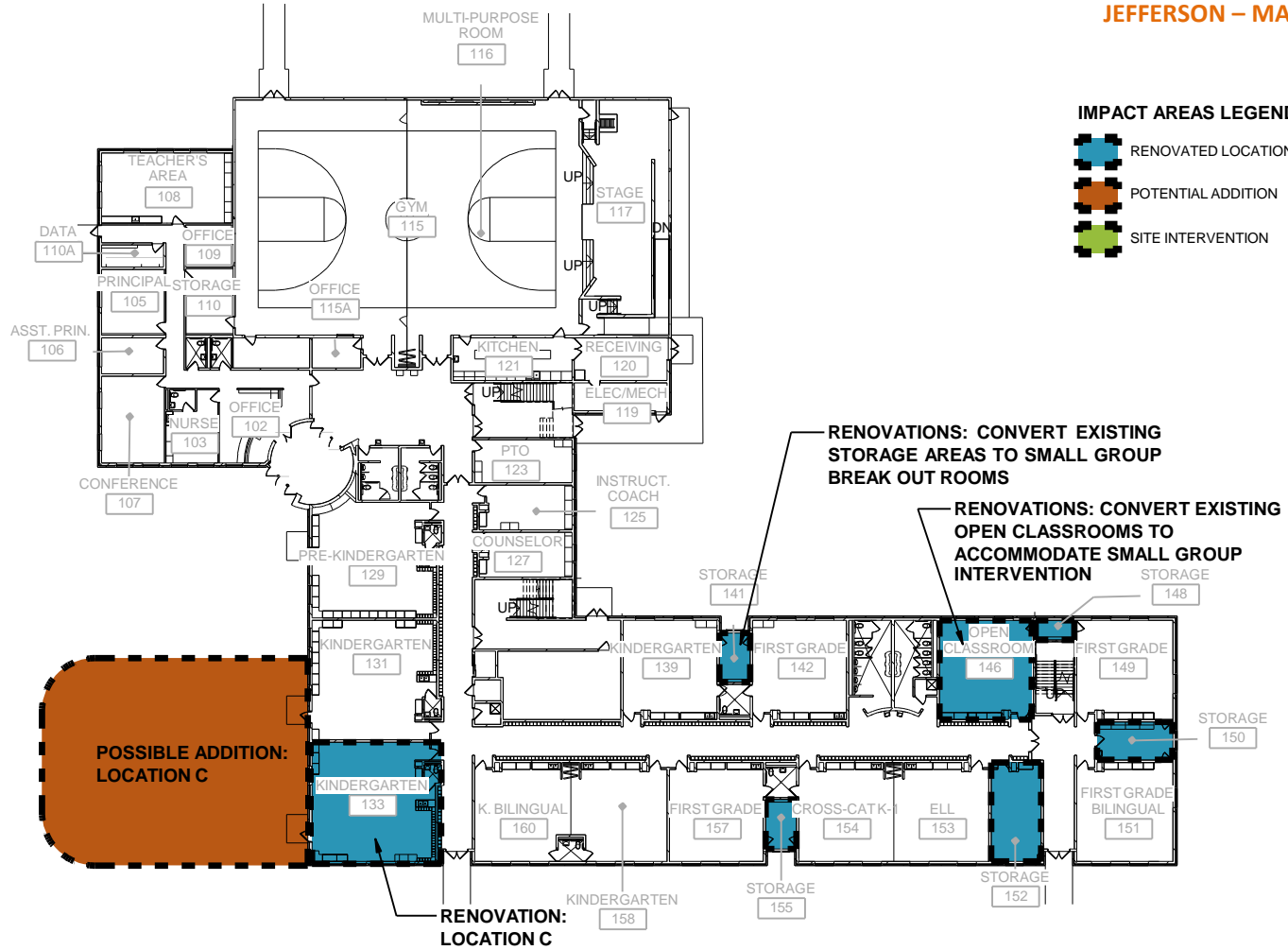




BERKELEY SCHOOL DISTRICT 87
LONG RANGE PLANNING STUDY
JEFFERSON – MAIN LEVEL

IMPACT AREAS LEGEND




- RENOVATED LOCATION
- POTENTIAL ADDITION
- SITE INTERVENTION

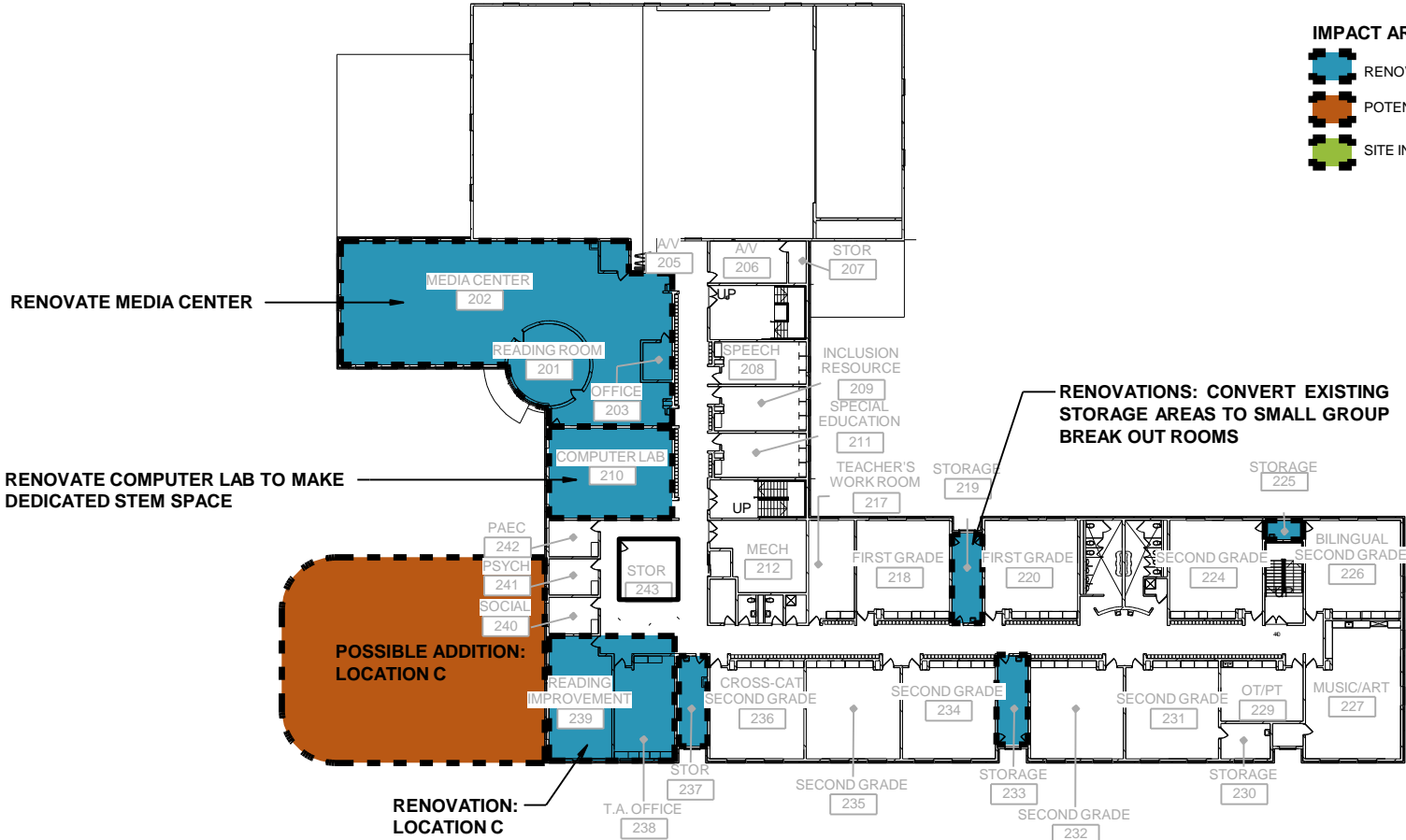




BERKELEY SCHOOL DISTRICT 87
LONG RANGE PLANNING STUDY
JEFFERSON – UPPER LEVEL

IMPACT AREAS LEGEND




-  RENOVATED LOCATION
-  POTENTIAL ADDITION
-  SITE INTERVENTION





BERKELEY SCHOOL DISTRICT 87
 LONG RANGE PLANNING STUDY
NORHLAKE & RILEY – SITE PLAN

IMPACT AREAS LEGEND

-  RENOVATED LOCATION
-  POTENTIAL ADDITION
-  SITE INTERVENTION

POSSIBLE MAIN OFFICE ADDITION - LOCATION A:
 -LIMITS DRIVE ACCESS TO HARD SURFACE PLAY
 -RELOCATES OFFICE WITH SECURE MAIN ENTRANCE TO PARKING LOT
 -ISOLATES MAIN OFFICE FROM MAIN BUILDING

POSSIBLE GYM REPLACEMENT AND ADDITION - LOCATION C:
 -LIMITS DRIVE ACCESS TO HARD SURFACE PLAY

PARENT DROP-OFF/PICK-UP

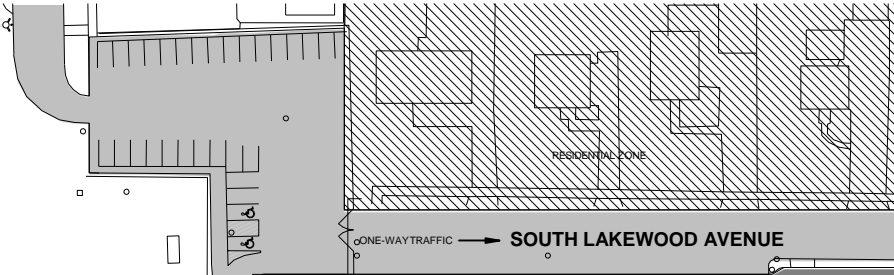
EAST LEMOYNE STREET

PLAYGROUND
 HARD SURFACE PLAY

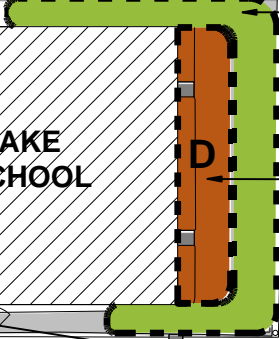
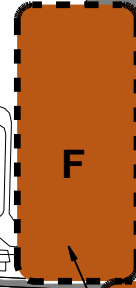
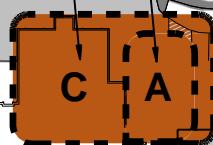
RILEY INTERMEDIATE SCHOOL

OPEN PLAY FIELDS

SOUTH WOLF ROAD



NORHLAKE MIDDLE SCHOOL



POSSIBLE 2-STORY ADDITION - LOCATION D:
 -CREATES OPPORTUNITIES FOR LEARNING SUITES/BREAK OUT SPACES

POSSIBLE REPLACEMENT / ADDITION - LOCATION E:
 -RELOCATE MAIN OFFICE
 -REPLACE CAFETERIA/KITCHEN

POSSIBLE 1-STORY ADDITION - LOCATION F:
 -RELOCATED GYM/CAFETERIA

POSSIBLE ADDITION - LOCATION B:
 -POTENTIAL FOR 2-STORY CLASSROOM ADDITION
 -HAS POTENTIAL PROPERTY LINE IMPLICATIONS

MODIFIED TRAFFIC PATTERN AND PARKING

ONE-WAY TRAFFIC → SOUTH LAKEWOOD AVENUE

RESIDENTIAL ZONE

VISITOR PARKING

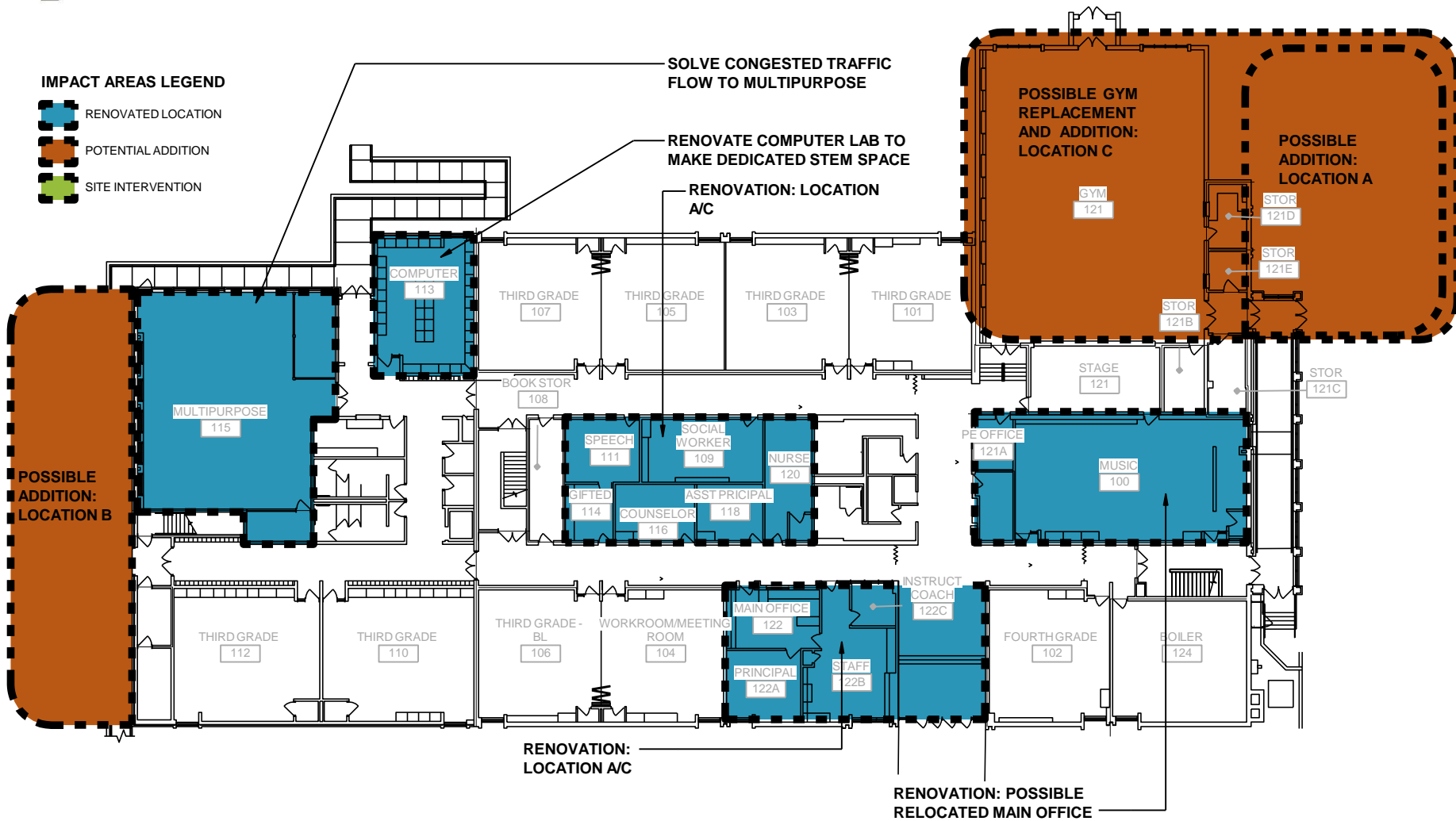
BUS LOADING/UNLOADING

STAFF PARKING



IMPACT AREAS LEGEND

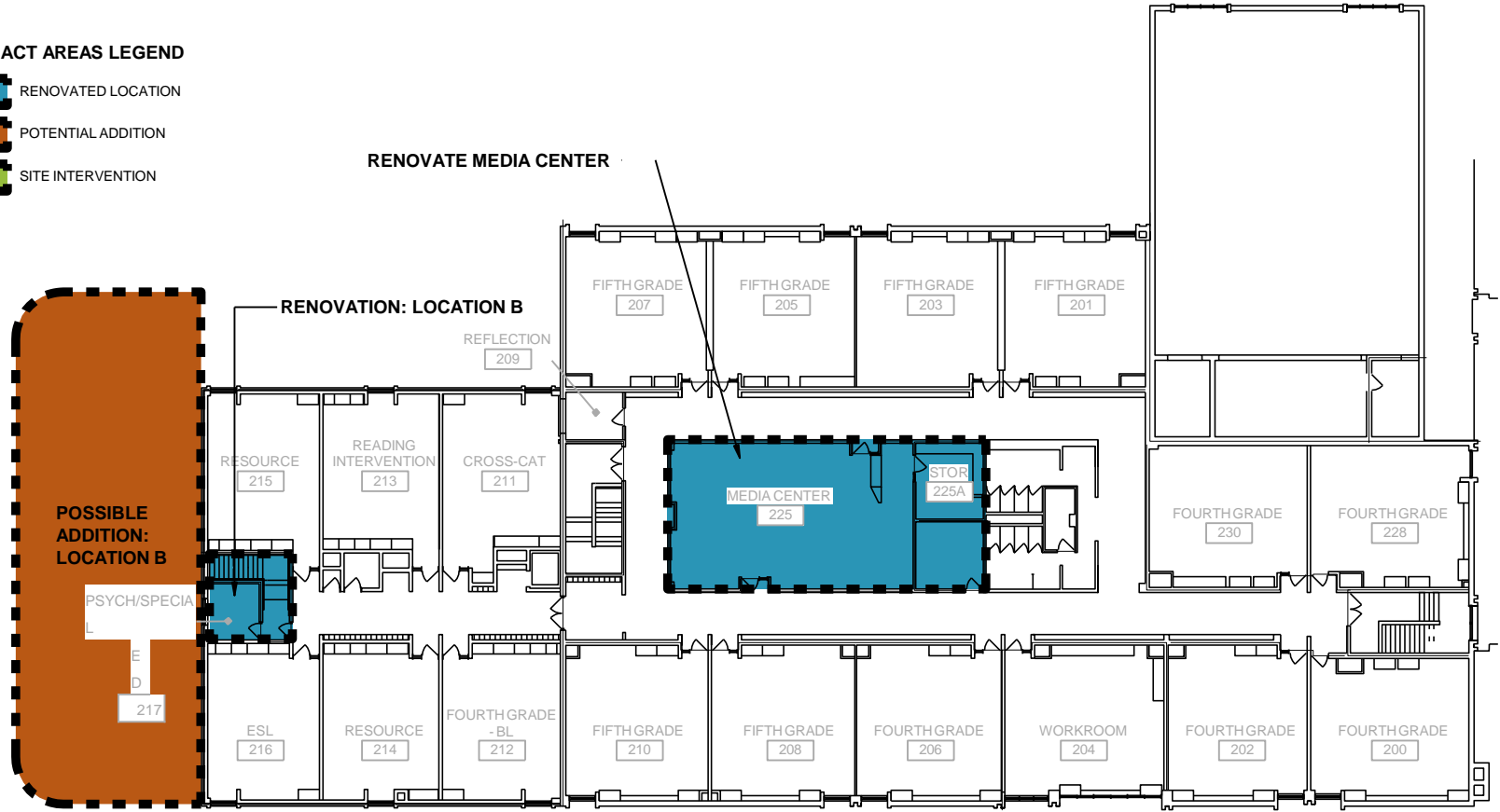
- RENOVATED LOCATION
- POTENTIAL ADDITION
- SITE INTERVENTION





IMPACT AREAS LEGEND




- RENOVATED LOCATION
- POTENTIAL ADDITION
- SITE INTERVENTION

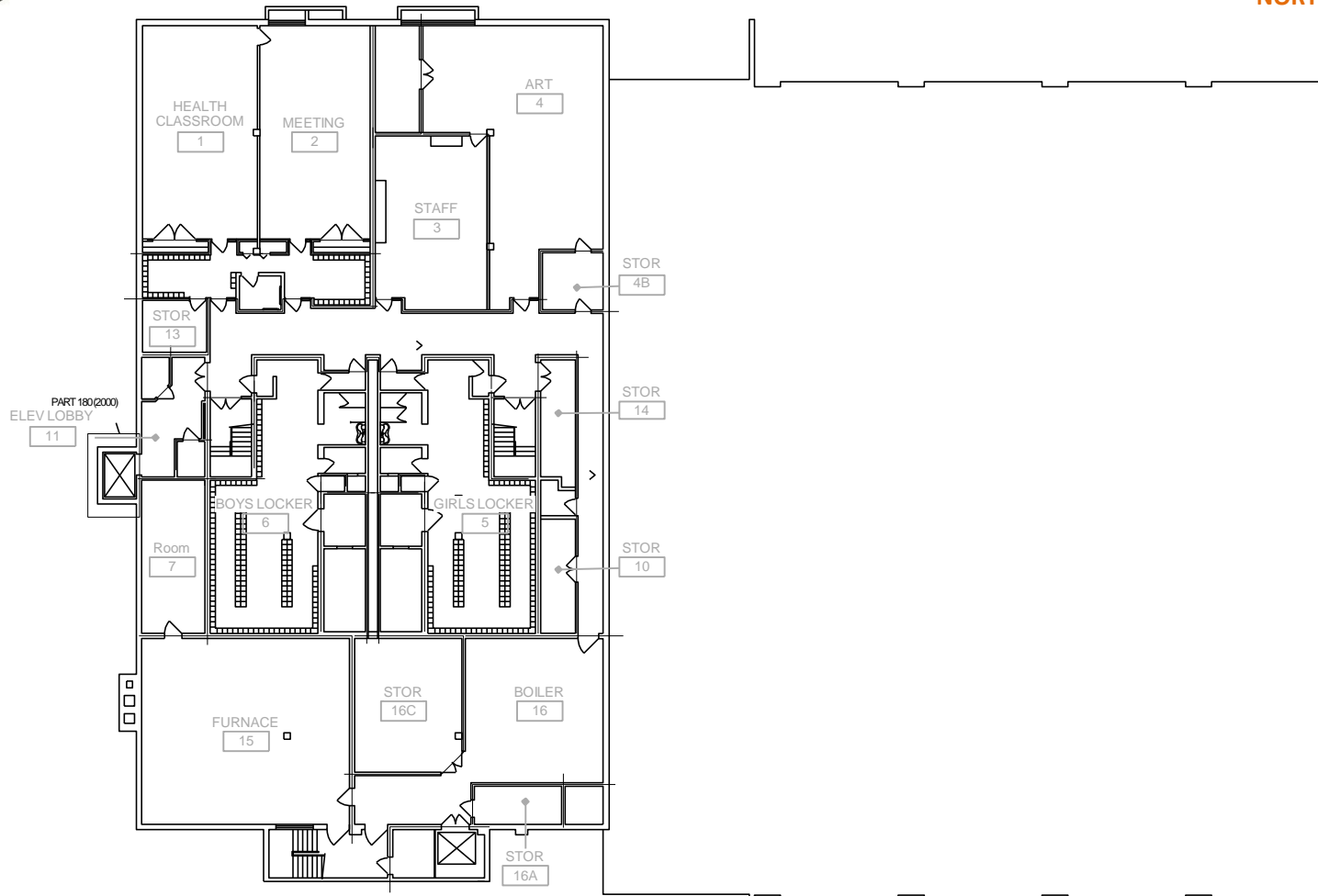




BERKELEY SCHOOL DISTRICT 87
LONG RANGE PLANNING STUDY
NORTHLAKE – LOWER LEVEL

IMPACT AREAS LEGEND

-  RENOVATED LOCATION
-  POTENTIAL ADDITION
-  SITE INTERVENTION



Wold

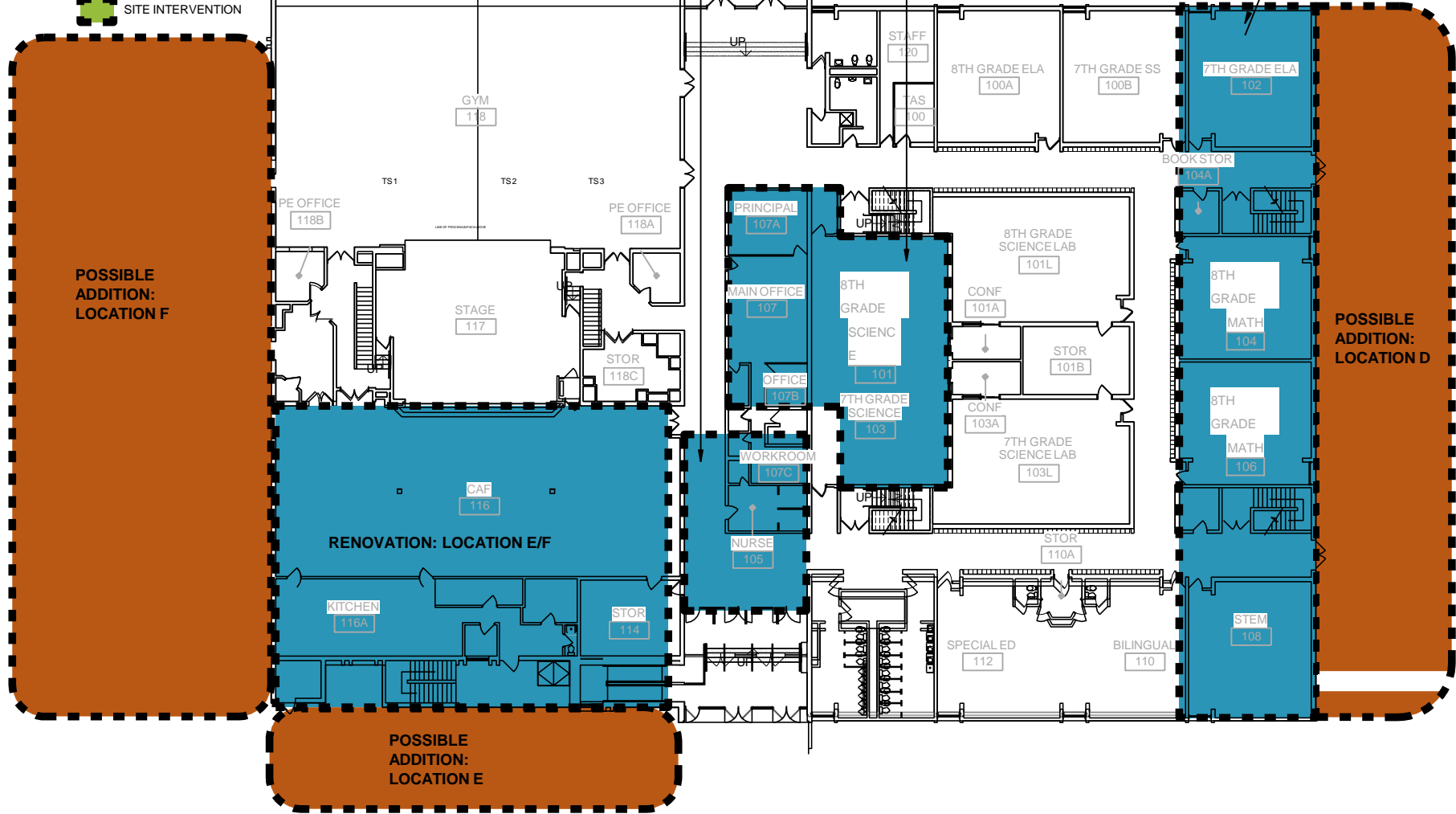
IMPACT AREAS LEGEND

- RENOVATED LOCATION
- POTENTIAL ADDITION
- SITE INTERVENTION

RENOVATED LEARNING COMMONS SPACE
 RENOVATED MAIN OFFICE LOCATION

BERKELEY SCHOOL DISTRICT 87
 LONG RANGE PLANNING STUDY
NORTHLAKE – MAIN LEVEL

RENOVATION: LOCATION D





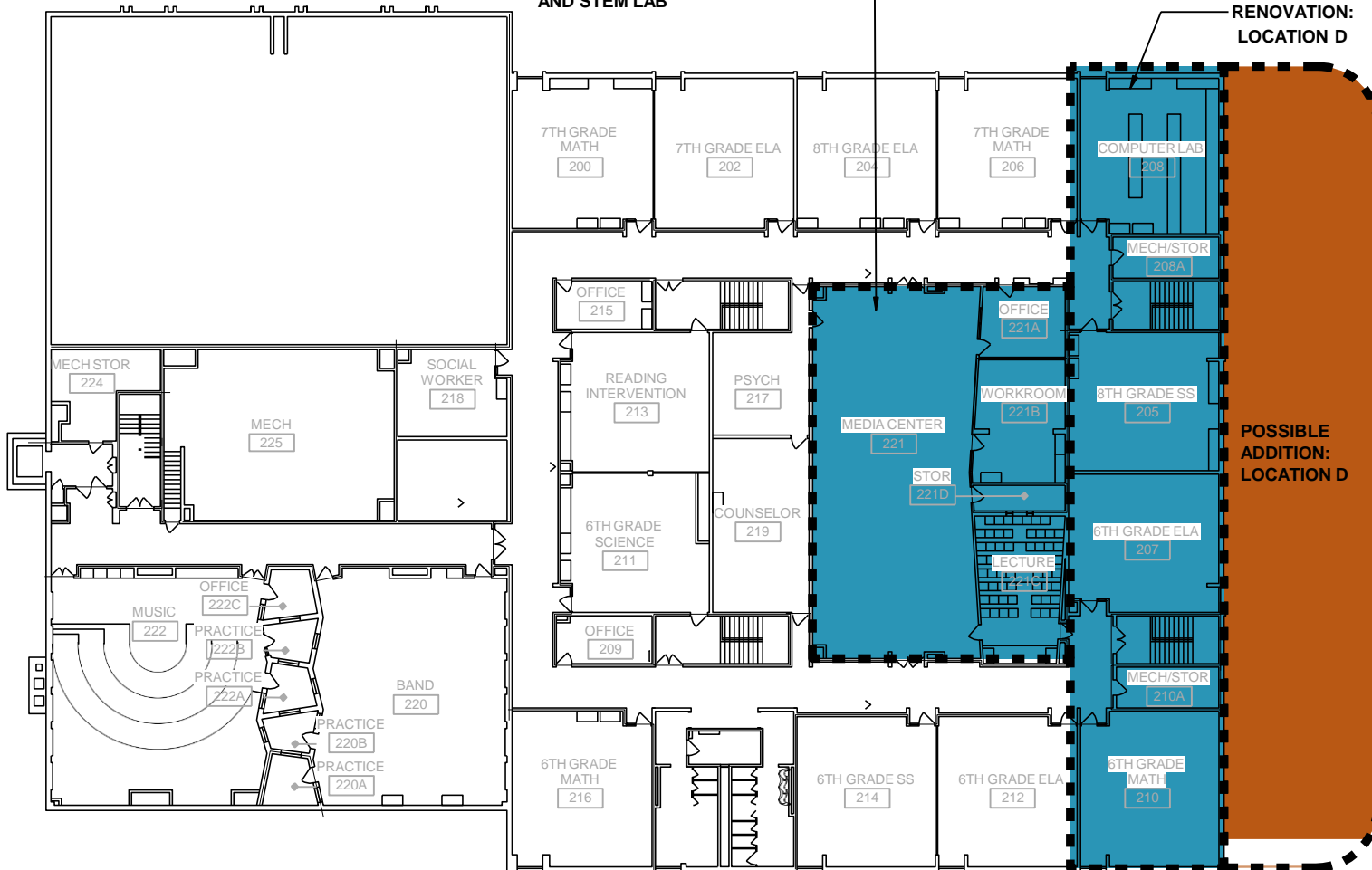
BERKELEY SCHOOL DISTRICT 87
LONG RANGE PLANNING STUDY
NORTHLAKE – UPPER LEVEL

**RENOVATED MEDIA CENTER
AND STEM LAB**

**RENOVATION:
LOCATION D**

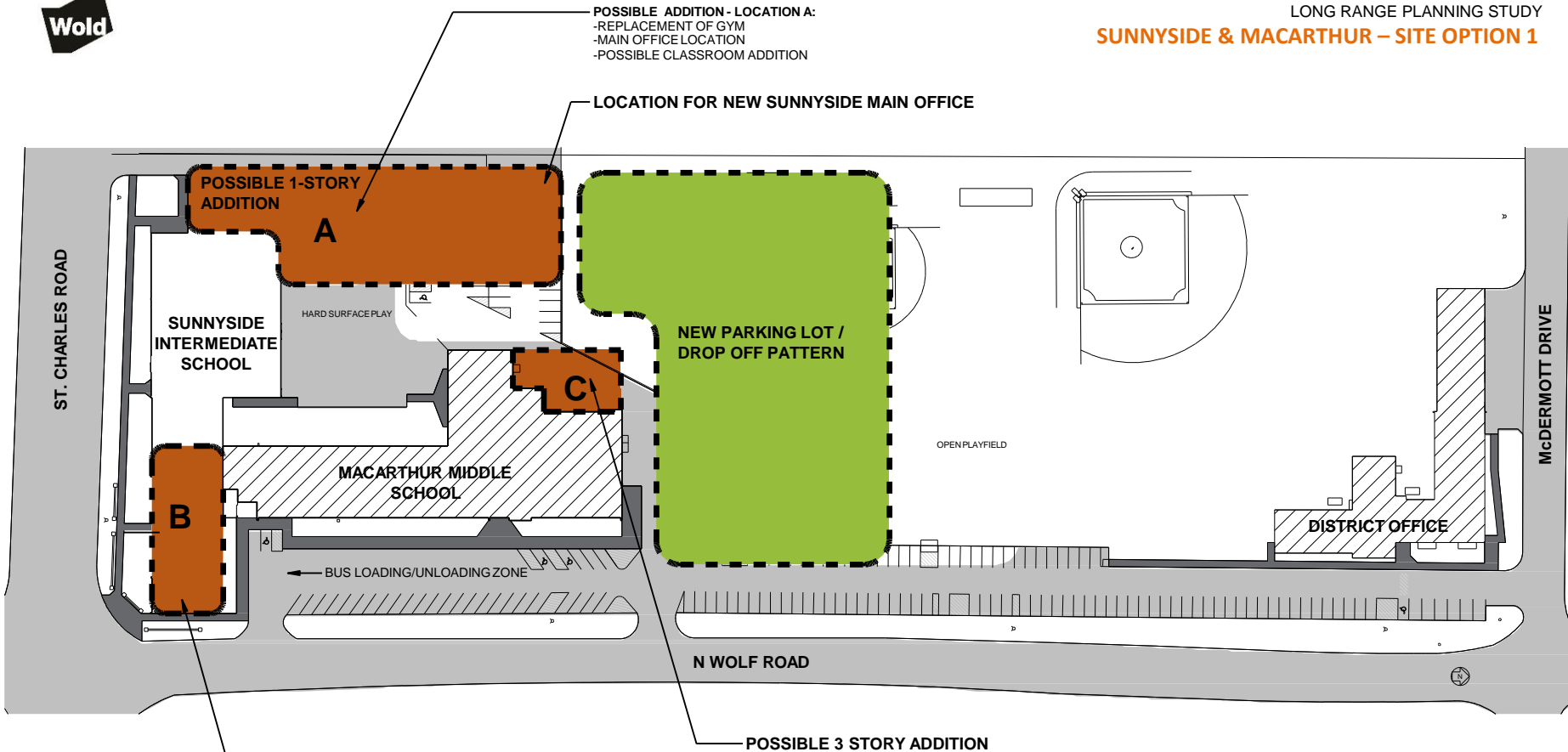
IMPACT AREAS LEGEND

- RENOVATED LOCATION
- POTENTIAL ADDITION
- SITE INTERVENTION





BERKELEY SCHOOL DISTRICT 87
 LONG RANGE PLANNING STUDY
SUNNYSIDE & MACARTHUR – SITE OPTION 1



POSSIBLE ADDITION - LOCATION A:
 -REPLACEMENT OF GYM
 -MAIN OFFICE LOCATION
 -POSSIBLE CLASSROOM ADDITION

LOCATION FOR NEW SUNNYSIDE MAIN OFFICE

POSSIBLE 1-STORY ADDITION

A

NEW PARKING LOT / DROP OFF PATTERN

C

SUNNYSIDE INTERMEDIATE SCHOOL

MACARTHUR MIDDLE SCHOOL

DISTRICT OFFICE

BUS LOADING/UNLOADING ZONE

B

N WOLF ROAD

POSSIBLE 3 STORY ADDITION

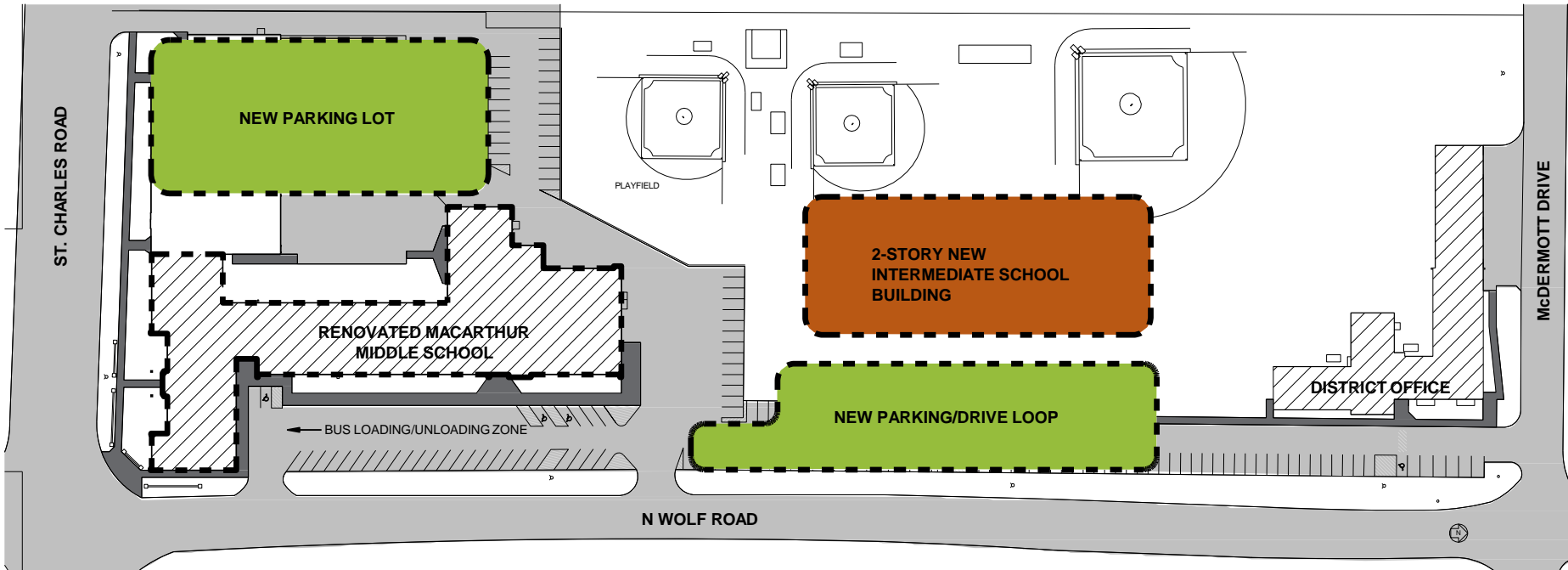
POSSIBLE ADDITION/RENOVATIONS - LOCATION B:
 -REPLACE MAIN LEVEL TO CREATE 2-STORY ADDITION
 -CREATES MORE EDUCATIONAL SPACE

IMPACT AREAS LEGEND




- RENOVATED LOCATION
- POTENTIAL ADDITION
- SITE INTERVENTION



BERKELEY SCHOOL DISTRICT 87
LONG RANGE PLANNING STUDY
SUNNYSIDE & MACARTHUR – SITE OPTION 2

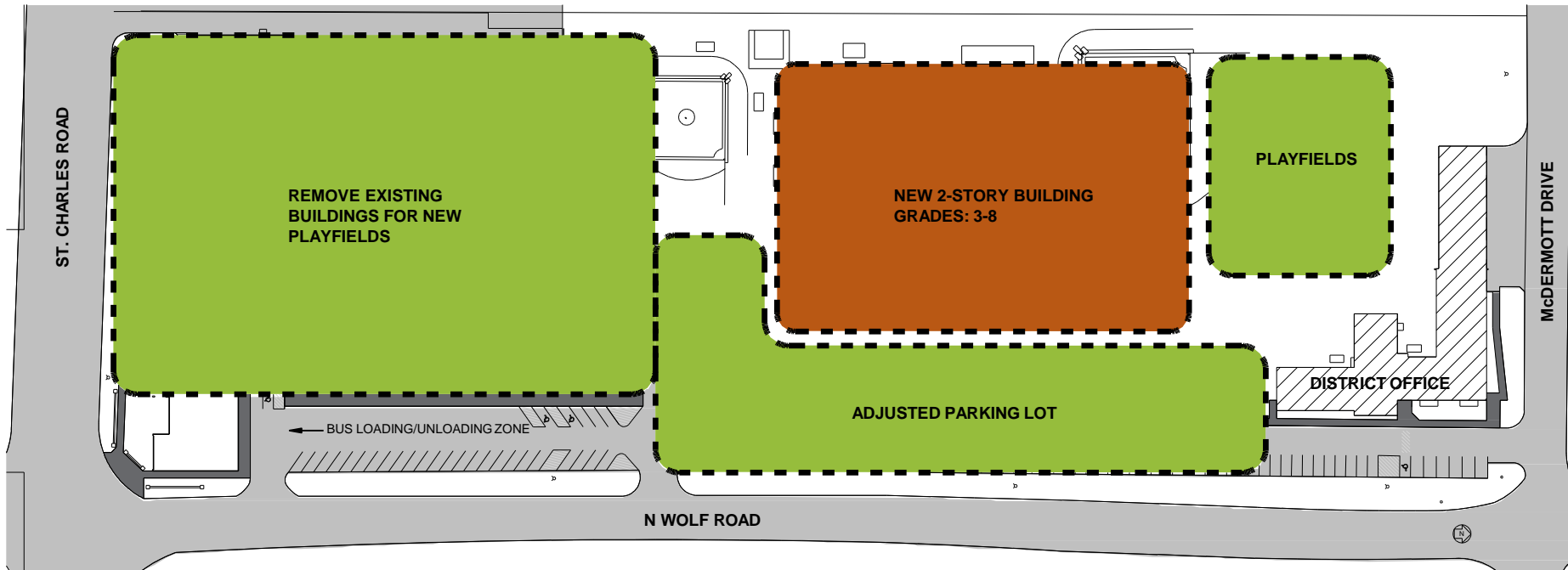


IMPACT AREAS LEGEND




-  RENOVATED LOCATION
-  POTENTIAL ADDITION
-  SITE INTERVENTION



BERKELEY SCHOOL DISTRICT 87
LONG RANGE PLANNING STUDY
SUNNYSIDE & MACARTHUR – SITE OPTION 3






IMPACT AREAS LEGEND

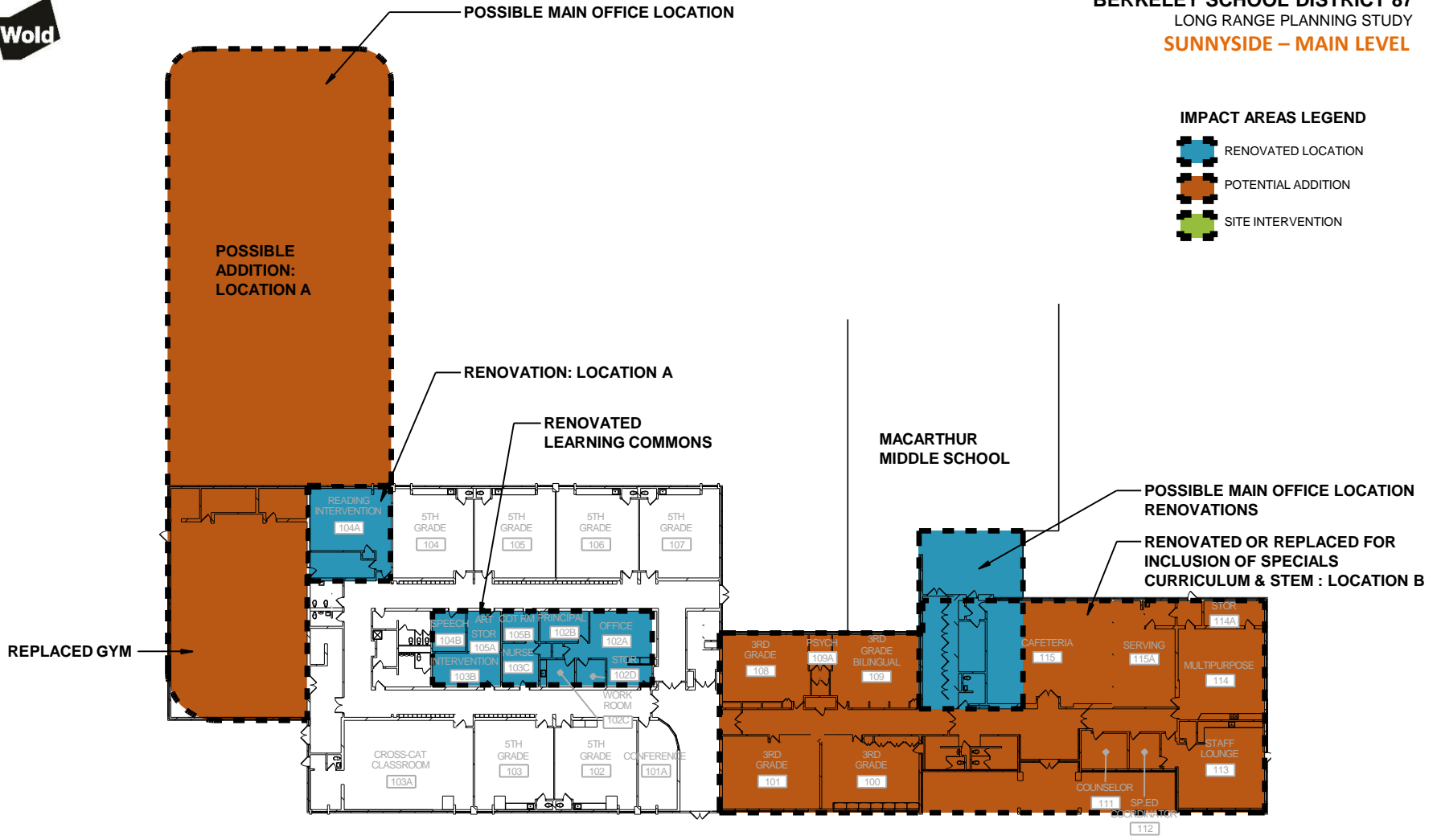
-  RENOVATED LOCATION
-  POTENTIAL ADDITION
-  SITE INTERVENTION



BERKELEY SCHOOL DISTRICT 87
LONG RANGE PLANNING STUDY
SUNNYSIDE – MAIN LEVEL

IMPACT AREAS LEGEND




-  RENOVATED LOCATION
-  POTENTIAL ADDITION
-  SITE INTERVENTION

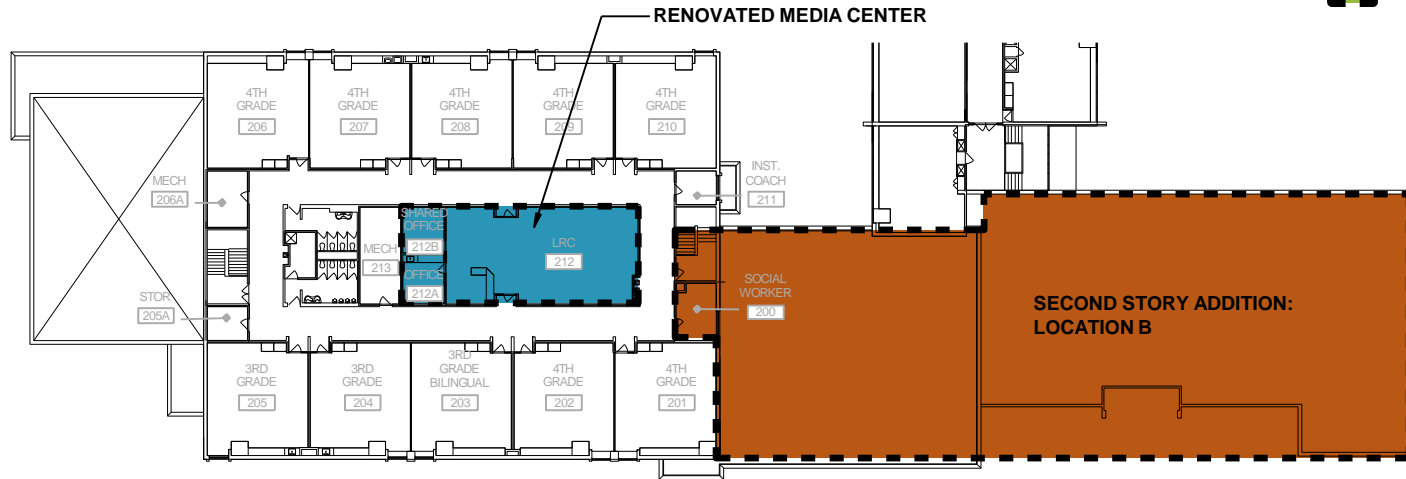




BERKELEY SCHOOL DISTRICT 87
LONG RANGE PLANNING STUDY
SUNNYSIDE – UPPER LEVEL

IMPACT AREAS LEGEND




-  RENOVATED LOCATION
-  POTENTIAL ADDITION
-  SITE INTERVENTION

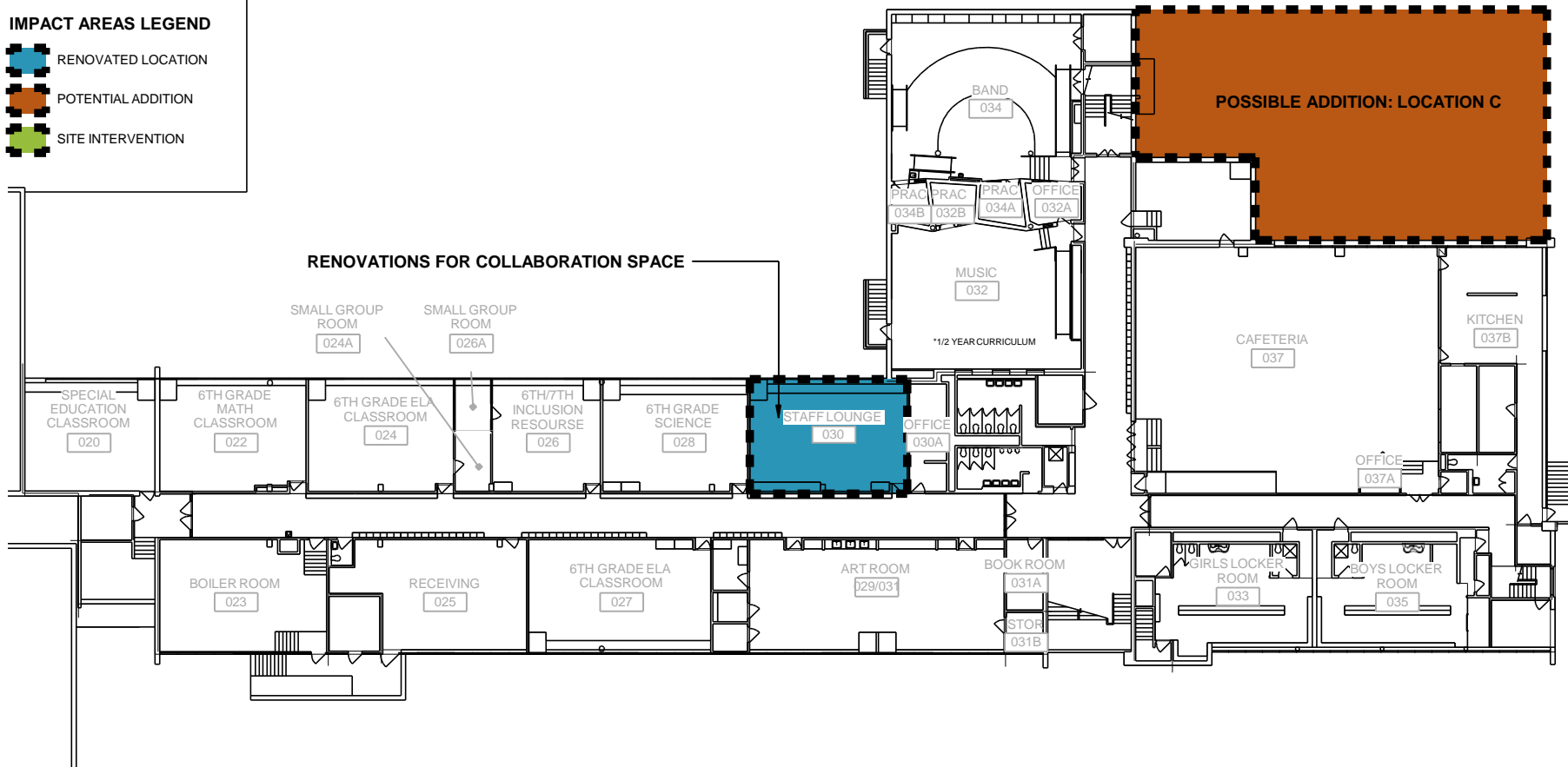




BERKELEY SCHOOL DISTRICT 87
LONG RANGE PLANNING STUDY
MACARTHUR – LOWER LEVEL

IMPACT AREAS LEGEND

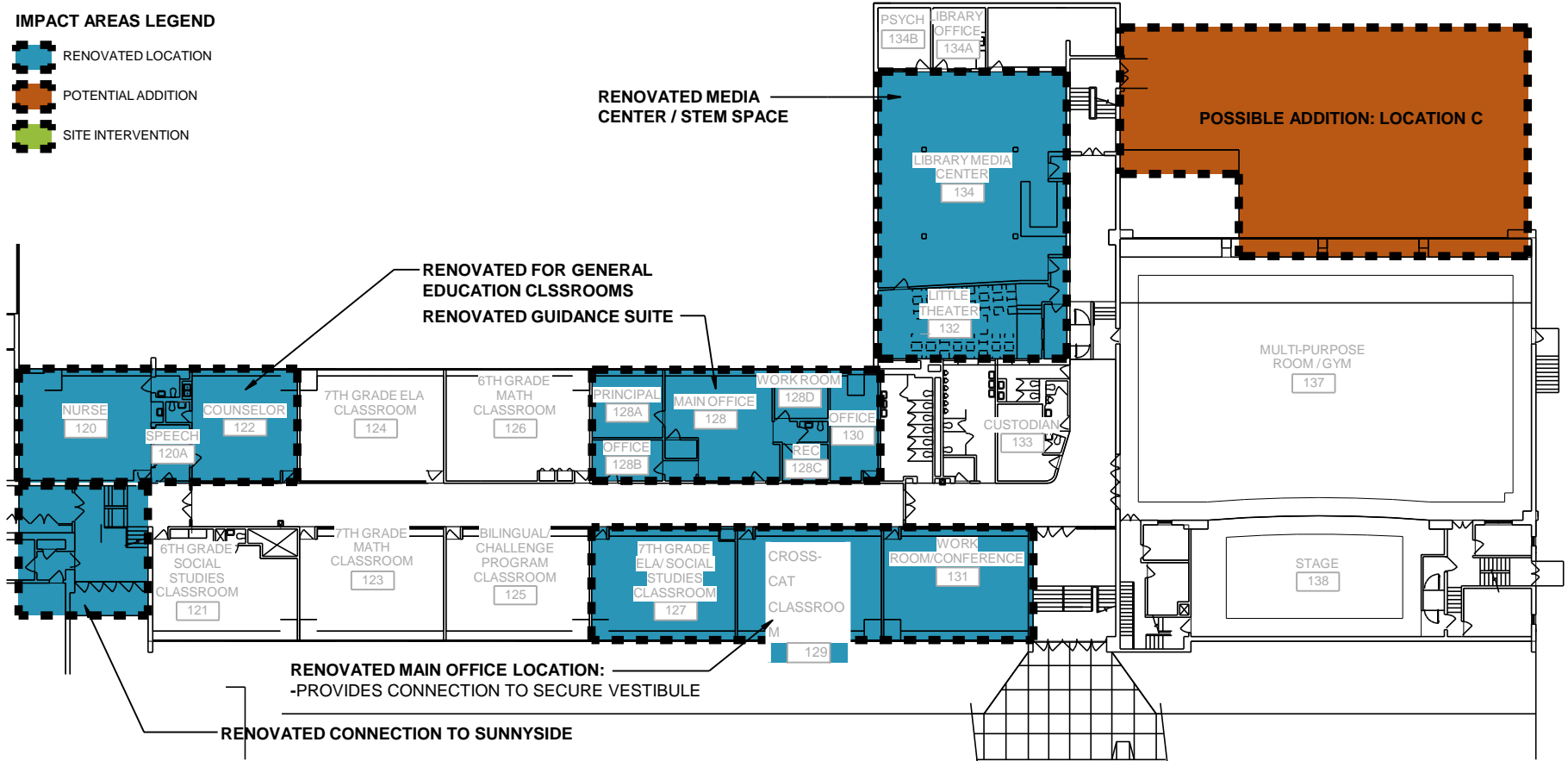
-  RENOVATED LOCATION
-  POTENTIAL ADDITION
-  SITE INTERVENTION





IMPACT AREAS LEGEND




- RENOVATED LOCATION
- POTENTIAL ADDITION
- SITE INTERVENTION

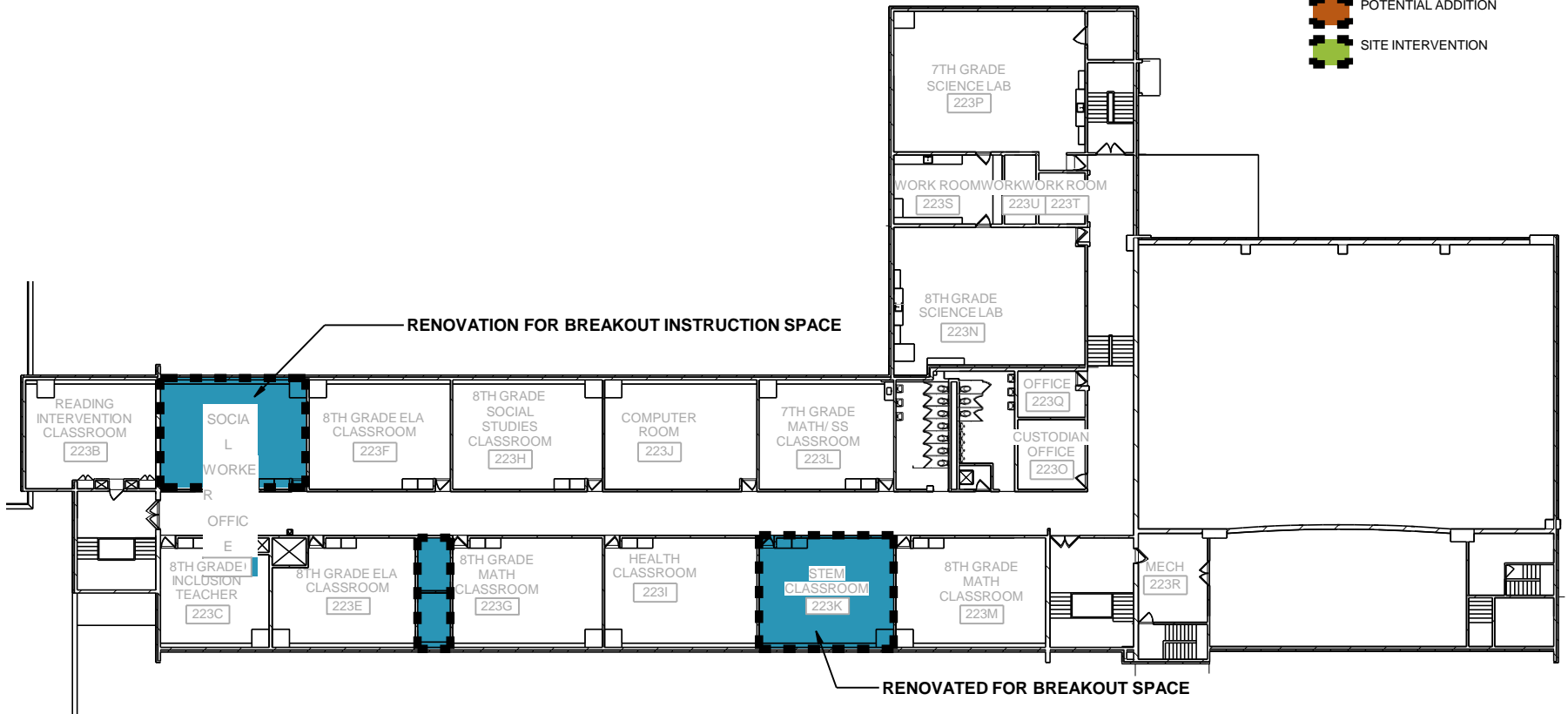




BERKELEY SCHOOL DISTRICT 87
LONG RANGE PLANNING STUDY
MACARTHUR – UPPER LEVEL

IMPACT AREAS LEGEND

-  RENOVATED LOCATION
-  POTENTIAL ADDITION
-  SITE INTERVENTION



Questions?